

# Healthwatch Rotherham: Guide to local services



---

# Contents

**Page 3: Introduction**

**Page 4: Primary Care**

**Page 5: Emergency Care/Urgent Care**

**Page 6: Urgent Care**

**Page 7: Sexual Health**

**Page 8: Mental Health – Urgent Help**

**Page 9: Mental Health Services – Adults**

**Page 11: Mental Health Services – Children and Young People**

**Page 13: Older People**

**Page 14: Cancer Support Services**

**Page 15: Healthy Living**

**Page 16: Social Care**

**Page 18: Foodbank Support**

**Page 19: Homeless charities and organisations**

**Page 20: Domestic Violence Organisations**

**Page 21: Support and Complaints**

# Your guide to Health and Social Care services in Rotherham:

Finding information about the service you need can often be overwhelming, or perhaps you don't even know which service is best for you.

We have produced this guide to help you find the right service for you.

## Healthwatch Rotherham:

We are the independent champion for people who use health and social care services.



Our sole purpose is to understand the needs, experiences and concerns of people who use health and social care services and to speak out on their behalf.

**Call:** 01709 717130 between the hours of 09:00 – 17:00 Monday to Friday.

**Post:** Healthwatch Rotherham, 27 Howard Street, Rotherham, S65 1JQ

**Email:** [info@healthwatchrotherham.org.uk](mailto:info@healthwatchrotherham.org.uk)

**healthwatch**  
Rotherham

## Primary Care:

### GP's:

GP's assess, manage, diagnose and treat illness.



### Registering with a GP:

Anyone in England can register with a GP Surgery for free. You can use the NHS 'Find a GP' tool to research GP's local to you. <https://www.nhs.uk/service-search/find-a-gp>

If you are struggling to register with a GP surgery, you can contact NHS England on: **0300 311 22 33**

### Pharmacies:

Pharmacists can offer clinical advice and over-the-counter medicines. You can also collect prescriptions here, access emergency contraception and stop smoking services.

### Dentistry:

You can register for a dentist in any area where appointments are available. You can find a dentist using the NHS 'Find a dentist' tool:

<https://www.nhs.uk/service-search/find-a-dentist>

If you cannot find a dentist accepting NHS patients, call NHS England on **0300 311 2233**.



## Emergency Care:

**999:**

Call 999 in a medical or mental health emergency.

You can contact emergency services via text if you are deaf or hearing impaired. To register your phone, text 'register' to 999 and follow the instructions.

**If it's not life threatening, call NHS 111**

## Urgent Care:

### **Accident and Emergency Departments:**

Attend A&E when it is a life-threatening emergency. If you are unsure of what to do, please ring 111 who can advise you.

**Rotherham Hospital – Moorgate Road, S60 2UD**

**Northern General Hospital, Sheffield – Herries Road, S5 7AU**



---

# Urgent Care:

## NHS 111:

NHS 111 helps people get the right advice and treatment when they urgently need it.

NHS 111 is open 24 hours a day 7 days a week.

To get help from NHS 111, you can:

- Go online to [nhs.uk](https://nhs.uk) (for assessment of people aged 5 and over only).
- Call **111** for free from a landline or mobile phone.

If you have difficulties hearing, you can use the NHS 111 British Sign Language Service:

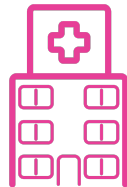
<https://signvideo.co.uk/nhs111/>

## Minor injuries/walk-in centres closest to Rotherham:

### **Montagu Hospital, Mexborough, S64 0AZ –**

Features a Nurse-led urgent treatment centre –  
Open 9am–9pm 7 days a week.

**Sheffield Walk-In Centre – S1 3PB:** Open  
8am–10pm, 7 days a week



## Sexual Health:

### Mesmac:

Yorkshire MESMAC offers a range of mental health and wellbeing services, including counselling, 1-2-1 support, group sessions and training.

**Telephone:** 01709 242202

**Email:** [rotherham@mesmac.co.uk](mailto:rotherham@mesmac.co.uk)

The logo for Yorkshire MESMAC is a purple square with the text "Yorkshire MESMAC" in white. "Yorkshire" is on the top line and "MESMAC" is on the bottom line, both in a sans-serif font.

Yorkshire  
MESMAC

### Rotherham Sexual Health Services:

**Address:** Rotherham Hospital C Level, Junction 3

**Telephone:** 01709 427777

### Pregnancy Advisory Service:

**Unplanned pregnancy:** If you're pregnant and unsure about what to do, please ring the Pregnancy Advisory Service to discuss whether having an abortion is the right choice for you. They are based in Rotherham Hospital and offer a confidential termination of pregnancy (abortion) service. You can call them directly on **01709 424542**.

# Mental Health:

## **Urgent help:**



**The Rotherham**  
NHS Foundation Trust

## **GP Surgery:**

Contact your GP surgery and book an emergency doctor's appointment.

## **Crisis Team – Rotherham:**

Operates a 24/7 crisis telephone line accessible to all

**Telephone: 0800 652 9571**

**Hard of hearing? Text phone service: Rotherham – 07974 603610**

## **999:**

If you, or someone else is in **immediate danger** or requires serious or life-threatening immediate **emergency** mental or physical health assistance, **dial 999**.

## **The Samaritans:**

The Samaritans offer 24/7 listening and support to people and communities in times of need.

**[jo@samaritans.org](mailto:jo@samaritans.org)**

**Telephone: 116 123**

**SAMARITANS**

## **Shout:**

Shout is the UK's first 24/7 text service, free on all major mobile networks, for anyone in crisis anytime, anywhere.

E-mail: **[info@giveusashout.org](mailto:info@giveusashout.org)** **Text: 85258**

**Website: <https://giveusashout.org/>**

## Mental Health Services – Adults:

A full mental health directory is available on our website at:

<https://healthwatchrotherham.org.uk/mental-health-services-directory-local-and-national>

### Amparo – South Yorkshire:

**E-mail:** [amparo.service@listening-ear.co.uk](mailto:amparo.service@listening-ear.co.uk)

**Website:** <https://amparo.org.uk/>

Support for those affected by suicide



### Andy's Man Club:

Andy's Man Club supports men with mental health issues and provides a safe and friendly environment for them to talk.

**E-mail:** [info@andysmanclub.co.uk](mailto:info@andysmanclub.co.uk)

**Telephone:** 07498 728485

### Rotherham IAPT:

Talking therapies for people suffering with, but not limited to, anxiety, depression, PTSD, OCD, Phobias and Panic Attacks.

**Telephone:** 03000 215108

**Website:** [iapt.rdash.nhs.uk](http://iapt.rdash.nhs.uk)



# Mental Health Services – Adults:

## Rotherham Mind:

**E-mail:** [contactus@rbmind.co.uk](mailto:contactus@rbmind.co.uk)

**Telephone:** 01709 919929

**Website:** <https://www.rbmind.co.uk/>

MIND provides mental health support, both locally and nationally.



Rotherham  
& Barnsley

## Rotherhive:

Provides a range of verified practical mental health & wellbeing information, support & advice for adults in Rotherham.

**Website:** <https://rotherhive.co.uk/>



RotherHive

## Rotherham Safe Space:

Rotherham Safe Space supports anyone experiencing a mental health crisis in Rotherham and the surrounding areas. It provides a safe place during the **weekend evenings** designed for people in crisis to go for support and to prevent avoidable attendances at A&E.

**Telephone:** 07760 173504

**Website:**

<https://touchstonesupport.org.uk/intensive-community-support/rotherham-safe-space>

# Mental Health Services – Children and Young People:

## **CAMHS – Rotherham:**

**<https://camhs.rdash.nhs.uk/rotherham/>**

Provides advice and support to children and young people and their families.

## **Childline:**

Childline is here to help anyone under 19 in the UK with any issue they're going through

**Telephone: 0800 1111**

**Website: <https://www.childline.org.uk/>**

## **Divert:**

**E-mail: [divert@cgl.org.uk](mailto:divert@cgl.org.uk)**

**Telephone: 01709 917 651**

DIVERT Rotherham is a free and confidential drug and alcohol service for children and young people aged up to 18.

## **Early Help:**

**E-mail: [ehtriage@rotherham.gov.uk](mailto:ehtriage@rotherham.gov.uk)**

**Telephone: 01709 334 905**

Early Help offers support to children and families. Services are based around: substance abuse, mental health, domestic and sexual abuse.

---

# Mental Health Services – Children and Young People:

## Kooth:

<https://www.kooth.com/>

Kooth offers digital emotional and mental health support for children and young people aged **between 11 and 24**.

**Available to Rotherham/South Yorkshire residents.**

## Nightline (Sheffield):

Confidential support service run for students, by students.

**Website:** <https://www.sheffieldnightline.co.uk/>

**Telephone: 0114 222 8787**



## Papyrus – HOPELINEUK:

**Call: 0800 068 4141 Email: [pat@papyrus-uk.org](mailto:pat@papyrus-uk.org)**

**Text: 07860 039 967**

Dedicated to the prevention of suicide in young people

## Student Minds:

Supports students to look after their mental health by providing information and advice.

[info@studentminds.org.uk](mailto:info@studentminds.org.uk)

**0113 343 8440**

## Young Minds:

**Text: 85258**

<https://www.youngminds.org.uk/young-person/>

Mental health charity for children, young people and their parents.

**YOUNGmINDS**  
fighting for young people's mental health

---

# Older People:

## Admiral Nurse Dementia Helpline:

The Admiral Nurses can help if you need information, advice and support with any aspect of dementia.

**Telephone:** 0800 888 6678

## Age UK Rotherham:

A local charity working in the community with older people, their families and carers.

**Telephone:** 01709 835214



## Alzheimer's Society:

Offers support for anyone affected by dementia.

**Telephone:** 0333 150 3456

## Crossroads Carers Resilience Service:

A short term intervention service for carers of people living with dementia, providing information, advice and practical support with the aim to build carers' resilience.

**Telephone:** 01709 464574

## Kashmiri and Yemini Older People's Group:

Holds a once weekly session for older people from the BME community with the aim to combat social isolation and increase social interaction within the BME communities.

**Telephone:** 01709 720744

# Cancer Support Services:

## Local Services:

### Rotherham Cancer Advocacy Service:

Provides support and advice for people affected by cancer in Rotherham

**E-mail:**

**[advocacy@citizensadvicerotherham.org.uk](mailto:advocacy@citizensadvicerotherham.org.uk)**

**Telephone: 01709 515680**

### Macmillan Welfare Rights:

**Support with:** Benefits, tribunal representation, accessing grants, applying for Blue Badges

**E-mail: [macmillanwelfarerights](mailto:macmillanwelfarerights@macmillan.org.uk)**

**uk**

**Telephone: 01709 823645**



### Rotherham Cancer Care:

Rotherham Cancer Care help people feel more in control and confident with what is to come. Services are free, and they work with the NHS to provide professional counselling services and complementary therapies.

**Telephone: 01709 375729**

**Website: <http://rotherhamcancercare.co.uk/>**

## Healthy Living: Local Services



### Get Healthy Rotherham:

The service supports the people of Rotherham to stop smoking, reduce their alcohol consumption, get more active, lose weight, and improve their overall health.

**E-mail:** [PARKWOOD.gethealthyrotherham@nhs.net](mailto:PARKWOOD.gethealthyrotherham@nhs.net)

**Telephone:** 01709 718720

**Website:** <https://gethealthyrotherham.co.uk/>

### Rotherham United Community Sport Trust:

The services provides fitness classes, weight loss support programmes and support groups

**E-mail:** [Community@rotherhamunited.net](mailto:Community@rotherhamunited.net)

**Telephone:** 01709 827 767

**Website:** <https://www.rucst.co.uk/>



### WHAM Rotherham:

The 0-19 Weight, Health and Attitude Management (WHAM) service support children and young people together with their families to achieve and maintain a healthier weight.

**E-mail:** [rg-h-tr.whamrotherham@nhs.net](mailto:rg-h-tr.whamrotherham@nhs.net)

**Telephone:** 01709 423214

**Website:**

[https://www.therotherhamft.nhs.uk/Childrens\\_Services/0-19\\_service/Weight\\_Management\\_Service/](https://www.therotherhamft.nhs.uk/Childrens_Services/0-19_service/Weight_Management_Service/)

## Social Care

### Local Services

#### **Making Space – Carers Dementia Service:**

**E-mail:** [rotherhamcarers@makingspace.co.uk](mailto:rotherhamcarers@makingspace.co.uk)

**Telephone:** 01709 910889

**Website:** <https://www.makingspace.co.uk/>

Making Space staff offer information, advice and emotional support to people living with Dementia and their carers.

#### **Home Instead Rotherham – Home Care & Live-In Care:**

**Telephone:** 01709 837170

**Website:** <https://www.homeinstead.co.uk/rotherham/>

Provides home care services: companionship, home help and housekeeping and personal care.

#### **Rotherham Council:**

**Telephone:** 01709 822330

**Website:**

<https://www.rotherham.gov.uk/adult-social-care>

Report suspected abuse or neglect of an adult

#### **Rotherham Hospice:**

**E-mail:** [reception@rotherhamhospice.org.uk](mailto:reception@rotherhamhospice.org.uk)

**Telephone:** 01709 308 900

**Website:** <https://www.rotherhamhospice.org.uk/>

Available to anyone over the age of 18 years affected by a terminal illness.



Rotherham  
Hospice

## Social Care: Local Services:

### Barnardos:

**E-mail:** [rotherhamyoungcarers@barnardos.org.uk](mailto:rotherhamyoungcarers@barnardos.org.uk)

**Telephone:** 01709 377157

**Website:** <https://www.barnardos.org.uk/>

Barnardos help children through the trauma of sexual abuse and exploitation.

**Believe in  
children**



**Barnardo's**

### Crossroads Care:

**Telephone:** 01709 360272

**Website:** <https://crossroadsrotherham.co.uk/>

Crossroads provide flexible services to people of all ages and with a range of disabilities and health conditions

### Beacon South Yorkshire Carer Support:

**E-mail:** [info@beaconsy.org.uk](mailto:info@beaconsy.org.uk)

**Telephone:** 01226 814 012

**Website:** <https://www.beaconsy.org.uk/>



Beacon South Yorkshire provides a range of services supporting carers across South Yorkshire who are caring for people with disabilities, mental health, dementia, substance misuse, or who are elderly.

# Foodbank support

## Local organisations:

### Rotherham Food Bank:

**[office@rotherham.foodbank.org.uk](mailto:office@rotherham.foodbank.org.uk)**

**Telephone: 01709 372104**

**<https://rotherham.foodbank.org.uk/>**

Rotherham Food Bank provide three days' nutritionally balanced emergency food and support to local people who are referred into the service in crisis.



### Social Supermarket:

**[information@rotherhamminster.co.uk](mailto:information@rotherhamminster.co.uk)**

**Telephone: 07419 200405**

**<https://rotherhamminster.co.uk/social-supermarket>**

As well as paying a visit to the shop, members can join activities, receive support in making positive life changes and find a new community to belong to.



## National Organisations:

**<https://fareshare.org.uk/>**

**Telephone: 020 7394 2468**

**[enquiries@fareshare.org.uk](mailto:enquiries@fareshare.org.uk)**

FareShare is the UK's longest running food redistribution charity.



# Homeless charities and organisations:

## Local organisations:

### Shiloh:

Shiloh offers support to adults who are homeless or at risk of becoming homeless.

**Telephone:** 01709 559504

**Website:** <https://www.shilohrotherham.org.uk/>

### Lighthouse Homes:

Lighthouse Homes offer immediate and long term accommodation to women and men who are homeless.

**E-mail:** [info@lighthousehomes.co.uk](mailto:info@lighthousehomes.co.uk)

**Telephone:** 01709 364 600

<https://lighthousehomes.co.uk/>



## National organisations:

### Crisis:

For people experiencing homelessness.

**E-mail:** [supporter.helpline@crisis.org.uk](mailto:supporter.helpline@crisis.org.uk)

**Telephone:** 08000 384838

<https://www.crisis.org.uk/>



**Shelter:** **Telephone:** 0344 515 2000

<https://england.shelter.org.uk/>



# Domestic violence organisations:

## Local services

### Rotherham Rise:

**Contact:** [help@rotherhamrise.org.uk](mailto:help@rotherhamrise.org.uk). or **0330 2020571**

**Website:** <https://rotherhamrise.org.uk/>

This service provides support to Adults, Young People and Children affected by Domestic Abuse and Child Sexual Exploitation.



### Rotherham Abuse Counselling Service:

**Contact:** **01709 835482** or [info@rothacs.org.uk](mailto:info@rothacs.org.uk)

**Website:** <https://www.rothacs.org.uk/>

This service provides both counselling and Independent Sexual Violence Advocacy (ISVA) support.



### Apna Haq

**Contact:** [apnahaq1@gmail.com](mailto:apnahaq1@gmail.com) or **07824 767170**

**Website:** <https://apnahaq.org.uk/about-apna-haq/>

The service supports black and minority ethnic (BME) women and girls in Rotherham who are experiencing any form of violence, including domestic violence.

### Safe Spaces

**Website:** <https://uksaysnomore.org/safespaces/>

You can use a safe space in whichever way works for you. They provide a safeway to reach out to friends and family, and contact specialist support services.

# Support and Complaints:

## Healthwatch Rotherham:

You can contact Healthwatch Rotherham for information and signposting on health and social care services both locally and nationally. We want to hear about your experiences, good or bad, and can pass these onto services as feedback to improve.

**Telephone:** 01709 717130



**E-mail:** [info@healthwatchrotherham.org.uk](mailto:info@healthwatchrotherham.org.uk)

## Absolute Advocacy:

Absolute Advocacy is the Independent Advocacy Service for Rotherham. Their services are free and confidential and they can help find information, understand and uphold your rights, consider your options and get you the support you need.

**Website:**

<https://www.absoluteadvocacy.co.uk/contact-absolute-advocacy-rotherham/>

**Telephone:** 01709 794294

## **Support and Complaints:** **Citizens Advice Rotherham and District:**

Citizens Advice Rotherham offers free, confidential, independent and impartial advice to everyone. They can assist you with welfare benefits, employment, debt, housing and legal rights amongst other things.

**Telephone:** 0808 278 7911

**Website:** <http://www.citizensadvicerotherham.org.uk/>

## **NHS England:**

NHS England welcomes concerns, compliments and complaints as valuable feedback that will help them learn from your experiences and make improvements to the services they commission.

**E-mail:** [england.contactus@nhs.net](mailto:england.contactus@nhs.net)

**Telephone:** 0300 311 22 33

**Website:**

<https://www.england.nhs.uk/contact-us/complaint/complaining-to-nhse/>



## **Parliamentary and Health Ombudsman:**

Make final decisions on complaints that have not been resolved. They do this fairly and without taking sides. This service is free.

**Helpline:** 0345 015 4033

**Website:** <https://www.ombudsman.org.uk/>



Healthwatch Rotherham  
27 Howard Street,  
Rotherham  
S65 1JQ

<https://healthwatchrotherham.org.uk/>

t: 01709 717130

e: [info@healthwatchrotherham.org.uk](mailto:info@healthwatchrotherham.org.uk)

 @HWRotherham

 [Facebook.com/HWRotherham](https://www.facebook.com/HWRotherham)