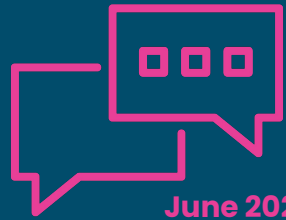


# Spotlight Shares....

Some of the groups/venues we visited this month:

- Migrant support drop-in (REMA)
- Rotherham Heart Support Group
- Dinnington Library
- Willows School
- Rotherham Minster
- Rotherham Hospital



June 2024

## Here's what you shared.....

***"The staff at Stag Medical Centre are lovely, they're very friendly and professional!"***

***"I've missed my hospital appointment today due to poor parking facilities - I'm going back to my GP to be referred to a different hospital"***

***"The RNID drop-ins are a great service, you don't need to worry if your batteries run out in your hearing aid or if you have other minor issues"***

***"Can you please explain why the capacity of the hydro pool at Park Rehab is still limited to numbers during Covid and has not been increased to pre covid loading allowance?"***

***"Diabetic services are very poor in our area, we used to have services based at the Maltby Health Service Centre, but that's all changed, I feel Maltby is getting forgotten about"***