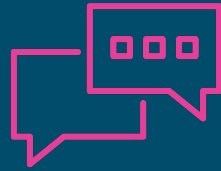


Spotlight Shares....



Some of the groups/venues we visited this month:

- Making Space Dementia Cafe
- Rotherham Hospital
- St Mary's Church coffee pot
- MCVV

December
2023

Here's what you shared.....

"I'm a patient at Ravenfield Medical Centre. It's a fantastic doctors, everyone is great there and I get good care from my doctor and a nurse that I see regularly. I have dementia."

"The NHS 111 Paramedic staff are great in the ambulance, however my wife fell recently, she has dementia and she seemed very ill and dizzy, confused following the fall and I was very worried about her. The ambulance took nearly an hour to arrive which felt like a very long time when you're really worried about someone."

"My mother is an elderly lady with dementia so I am a carer for her. She managed to injure her arm and there was a big cut there so I had to drive her to Accident and Emergency. We had to wait for hours until a doctor could assess her whilst she was bleeding quite a lot and it was very worrying at the time. They did finally manage to attend to her and stitched up the wound. The team did a good job of treating her but I wish we did not have to wait so long to get her seen given the nature of her bleeding and advanced age"

"The car parking is terrible at the hospital. We have to set off hours before appointments at the hospital to ensure we can find a space and make our appointments on time. If local residents aren't happy about a multi-storey, can they not go underground??"